

# Table of Contents

|  |    |
|--|----|
| <b>Introduction</b> .....  | 3  |
| <i>"The Crab that Played with the Sea" from Just So Stories by Rudyard Kipling.</i><br>(Published by Penguin, USA. May, 1990.)   |    |
| Summary—Sample Plan—Overview of Activities—Book Reviews—About the Crab—<br>Research Projects—Time Line—Words—Polar Opposites—Pau Amma Gameboard—A<br>Sandy Scene—Ocean Blocks—Geographical Features—Plants of the Ocean—Ocean Plant<br>Facts—Tides Come and Go                   |    |
| <b>The Cay</b> by Theodore Taylor (Avon Books, 1969) .....   | 25 |
| <i>(Available in Canada, Avon; UK and Australia, Transworld Publishers)</i>  |    |
| Summary—Sample Plan—Overview of Activities—Daily Writing Activities—On the Map—<br>Mental Images—Sequencing—Dat Be True—Sea Life on the Cay—Island Math—Polar<br>Opposites—Simulations—Place Mats—Sharks—Informational Scavenger Hunt—A Tiny<br>Book—Sea Beasts—Cause and Effect |    |
| <b>Poetry</b> .....  | 46 |
| Ocean Chants—Ocean Poetry —Ocean Chant— Three Dimensional Diorama—<br>Make Your Own Puzzles  |    |
| <b>Daily Writing Activities</b> .....  | 52 |
| Animal Webs—A Strange Beginnings Notebook—Name It!—Animal Web Outline  |    |
| <b>Across the Curriculum</b> .....   | 55 |
| <b>Language Arts:</b> Oceans Word Banks—Starfish Crossword Puzzle—Mermaids—A Three<br>Choice Story   |    |
| <b>Math:</b> Lengthy Questions—Plot the Answers—Ocean Facts  |    |
| <b>Science:</b> Water Cycle—A Water Cycle Flow Chart—Water Experiments—<br>Experiment Form—Tides Puzzle—Whales and Fish Diagram  |    |
| <b>Social Studies:</b> Oceans and Seas—An Ecological Issue   |    |
| <b>Art/Music:</b> Easy Art Projects—Science Art  |    |
| <b>Life Skills:</b> Seafaring Recipes—Ocean Careers  |    |
| <b>Culminating Activity</b> .....  | 74 |
| An Ocean Filmstrip   |    |
| <b>Unit Management</b> .....   | 76 |
| Easy Bulletin Boards—Awards  |    |
| <b>Answer Key</b> .....  | 78 |
| <b>Bibliography</b> .....  | 80 |

# About the Crab

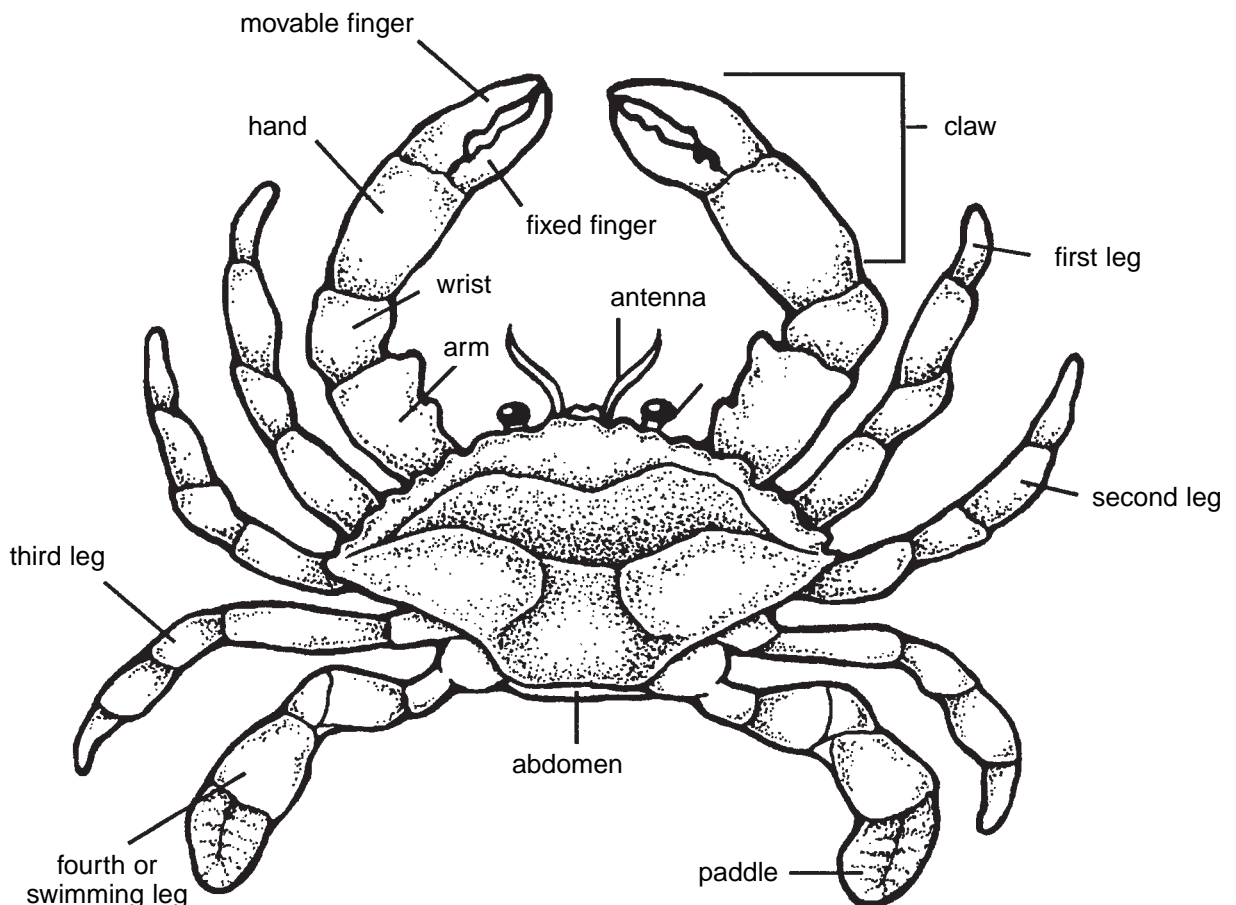
The crab is one of the most curious looking creatures to be found on the seashore. This animal is covered by a hard shell and has ten jointed legs. Its eyes rest on raised stalks which add to its odd appearance.

There are about 4,500 different kinds of crabs, many of which are edible. The blue crab, the Alaskan king crab, and the Dungeness crab are three of the most popular types that people consume.

Crabs may live in shallow waters along the shores or in the deep waters of the ocean. Their homes are often unusual. The tiny female pea crab, for example, lives in the shell of a live oyster. Hermit crabs live in empty seashells, while fiddler crabs live in burrows on sandy beaches. The pine crab makes its home in water that collects in bromeliad plants that grow on tropical trees.

Though their color, shapes, and sizes vary widely, most crabs are adept scavengers. They eat almost anything edible from the seabed. While some crabs are swimmers and even have a paddle on their last pair of legs, others run sideways on the sand and rocks of the seashore.

## Parts of a Blue Crab



# Tides—A Two Part Puzzle

First unscramble the words below—clues have been given to help you. Then write the words in the fill-in puzzle.

1. *mono* \_ \_ \_ \_ Its gravitational pull affects tides.
2. *deit* \_ \_ \_ \_ The regular rise and fall of the ocean
3. *pean* \_ \_ \_ \_ Unusually low tides
4. *rathe* \_ \_ \_ \_ The moon rotates around it.
5. *ragviyt* \_ \_ \_ \_ Tides are caused by this pull.
6. *rip gns* \_ \_ \_ \_ These tides occur twice a month all year.
7. *nsu* \_ \_ \_ It affects tides, too.
8. *diwn* \_ \_ \_ \_ This creates waves.
9. *gei hth* \_ \_ \_ \_ Distance from trough to crest
10. *ntglhe* \_ \_ \_ \_ Distance from crest to crest

The crossword puzzle grid is composed of white squares for letters and empty squares for blank space. The letters 'i', 'g', 't', and 'h' are placed in the following positions:

- 'i' is in the 4th square of the 3rd row.
- 'g' is in the 2nd square of the 5th row.
- 't' is in the 5th square of the 6th row.
- 'h' is in the 4th square of the 8th row.